

The Prince Charles Hospital
The Royal Brisbane & Women Hospital
Redcliffe Hospital
Caboolture Hospital

Facility/hospital/clinical service name

Metro North Hospitals ACEM Fellowship Trial Examination

2016.2

Short Answer Questions

SAQ Paper

Props Booklet

This paper is property of Metro-north Emergency Departments. It should not be distributed or published without previous permission of the DEMENT team please

ACEM Fellowship Trial Examination

2016.2

Short Answer Questions

SAQ Paper

Props Booklet

Examination time: 180 Minutes

Direction to Candidates:

- 1- All questions must be attempted
- 2- Answer each question in the space provided
- 3- Enter your name for each question
- 4- This paper has been designed into 3 parts, each part required to be completed in 60 minutes

Booklet one:	SAQ 1-9
Booklet two:	SAQ 10-18
Booklet three:	SAQ 19-27
Props Booklet:	All props

The 1st and last SAQs of each part are long questions:

SAQ 2:



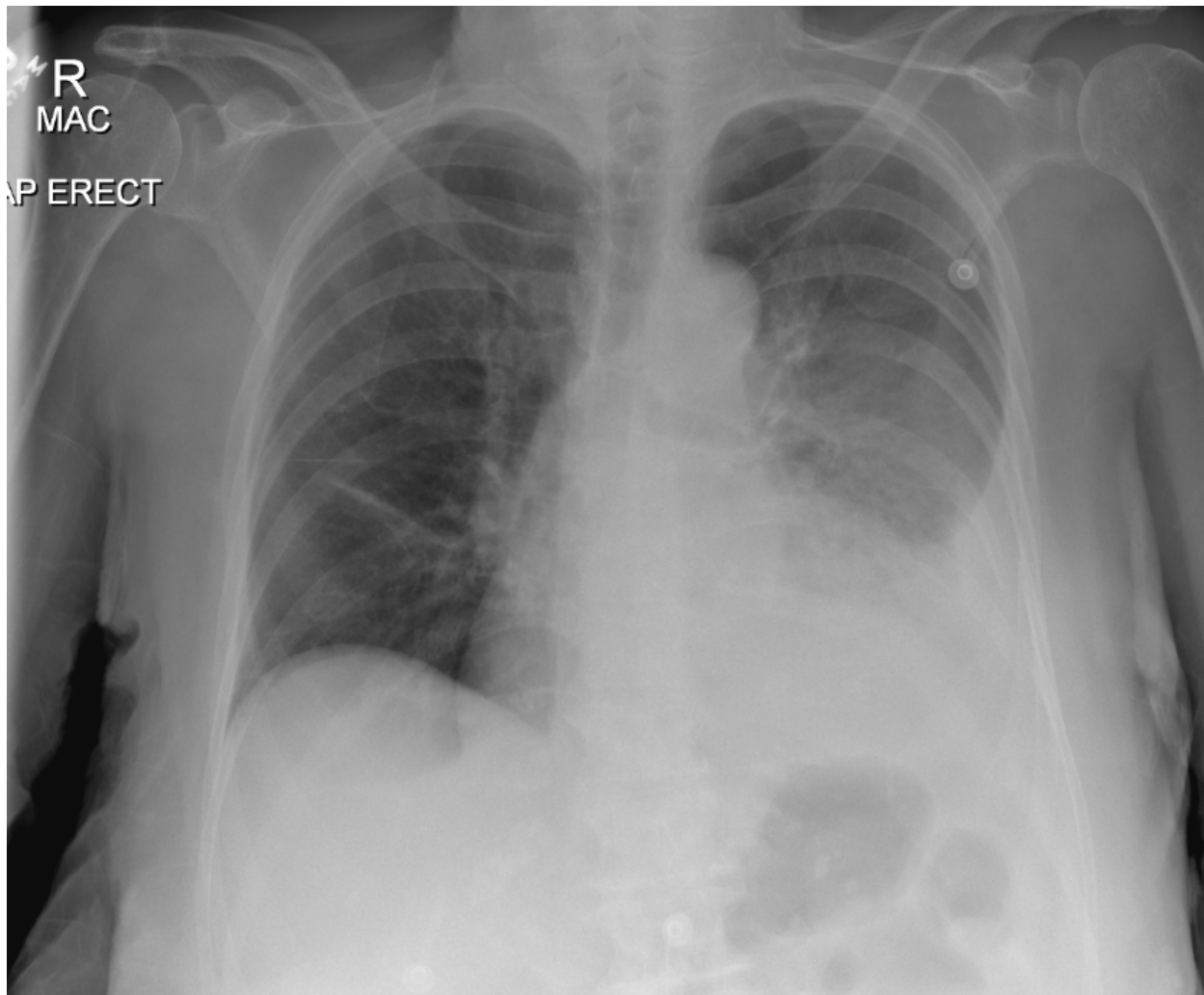
This paper is property of The Prince Charles, The Royal Brisbane & Women, Redcliffe and Caboolture Emergency Departments and should not be distributed or published without permission of the DENT teams.

SAQ 4:



This paper is property of The Prince Charles, The Royal Brisbane & Women, Redcliffe and Caboolture Emergency Departments and should not be distributed or published without permission of the DENT teams.

SAQ 8:



This paper is property of The Prince Charles, The Royal Brisbane & Women, Redcliffe and Caboolture Emergency Departments and should not be distributed or published without permission of the DENT teams.

SAQ 9:



This paper is property of The Prince Charles, The Royal Brisbane & Women, Redcliffe and Caboolture Emergency Departments and should not be distributed or published without permission of the DENT teams.

SAQ 12:



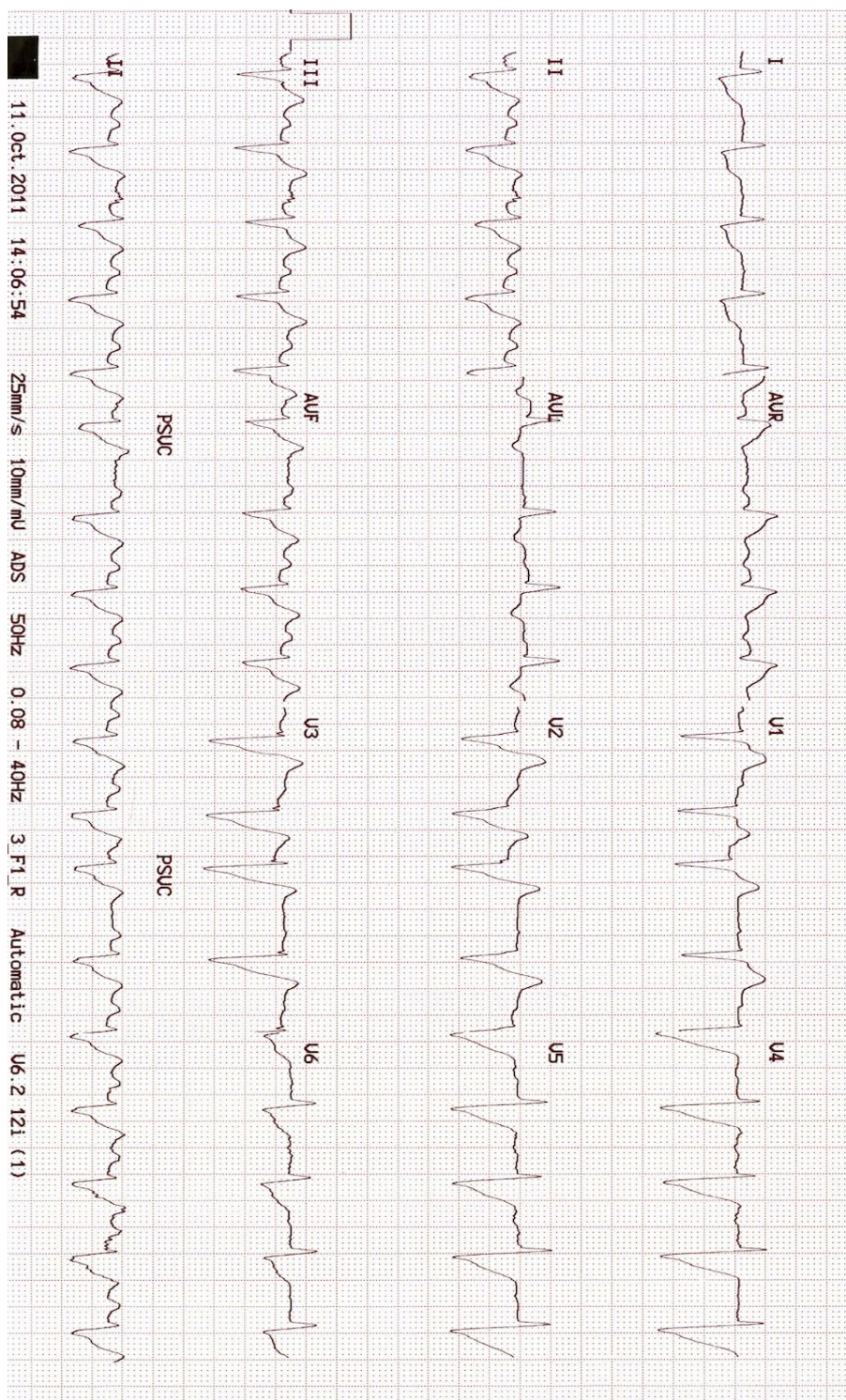
This paper is property of The Prince Charles, The Royal Brisbane & Women, Redcliffe and Caboolture Emergency Departments and should not be distributed or published without permission of the DENT teams.

SAQ 14:



This paper is property of The Prince Charles, The Royal Brisbane & Women, Redcliffe and Caboolture Emergency Departments and should not be distributed or published without permission of the DENT teams.

SAQ 15:



This paper is property of The Prince Charles, The Royal Brisbane & Women, Redcliffe and Caboolture Emergency Departments and should not be distributed or published without permission of the DENT teams.

SAQ 16:



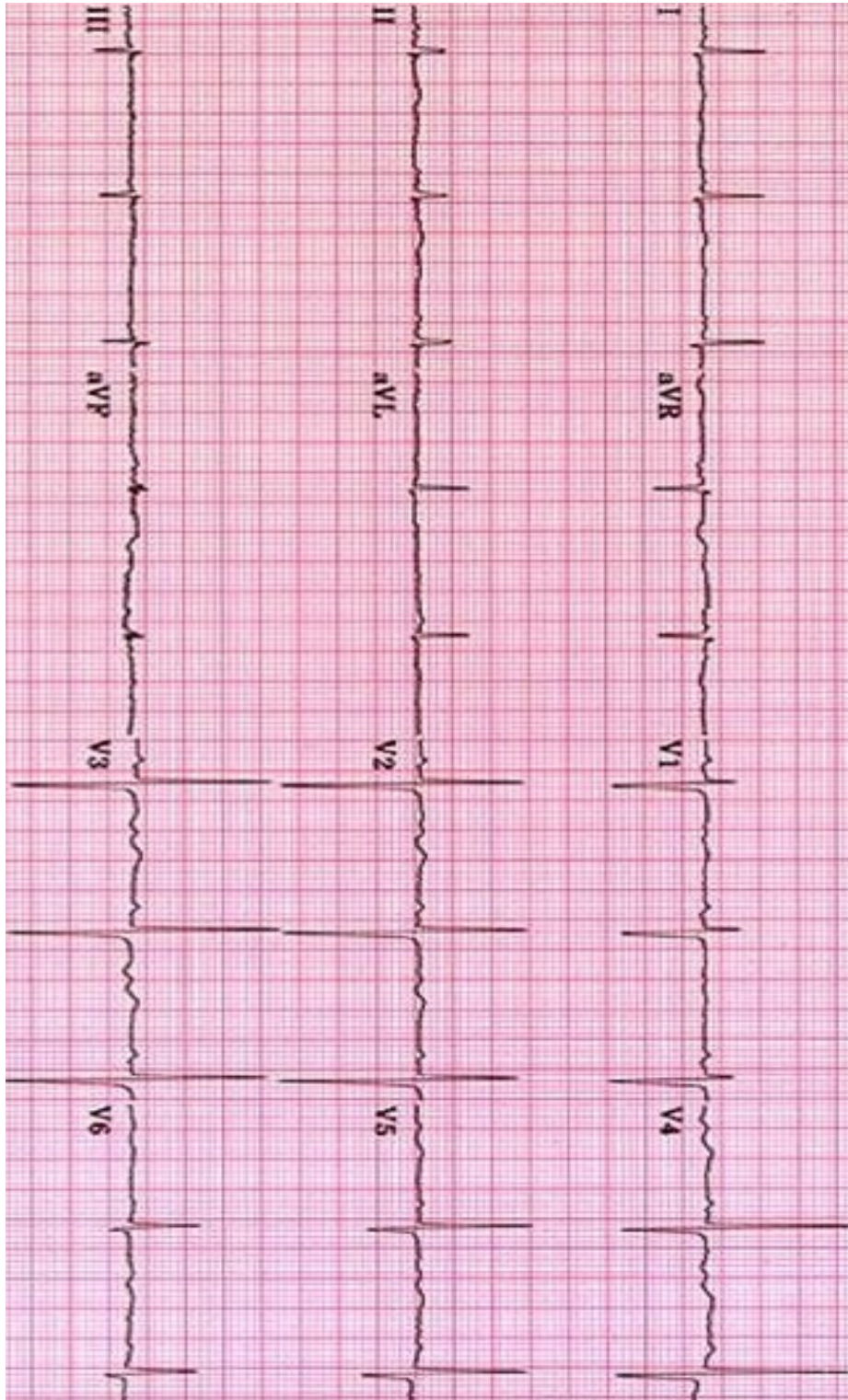
This paper is property of The Prince Charles, The Royal Brisbane & Women, Redcliffe and Caboolture Emergency Departments and should not be distributed or published without permission of the DENT teams.

SAQ 17:



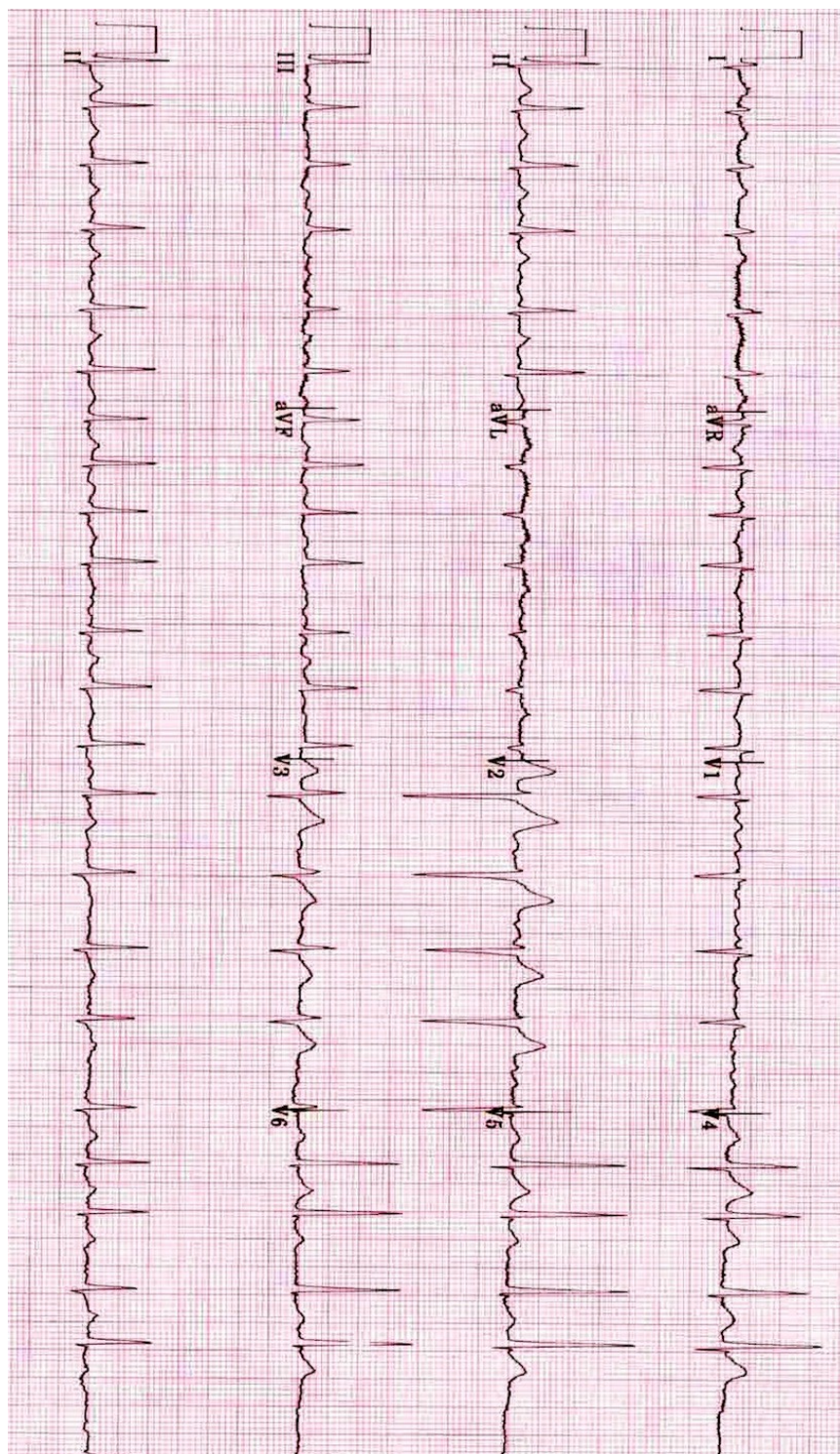
This paper is property of The Prince Charles, The Royal Brisbane & Women, Redcliffe and Caboolture Emergency Departments and should not be distributed or published without permission of the DENT teams.

SAQ 19:



This paper is property of The Prince Charles, The Royal Brisbane & Women, Redcliffe and Caboolture Emergency Departments and should not be distributed or published without permission of the DENT teams.

SAQ 23:



This paper is property of The Prince Charles, The Royal Brisbane & Women, Redcliffe and Caboolture Emergency Departments and should not be distributed or published without permission of the DENT teams.

SAQ 25:



This paper is property of The Prince Charles, The Royal Brisbane & Women, Redcliffe and Caboolture Emergency Departments and should not be distributed or published without permission of the DENT teams.